

STOUGHTON®

It's in the details

COMING
SOON!

REFRIGERATED TRAILER



BONDED SIDE POSTS

The bonded side posts on our new Refrigerated Trailer reduces the number of holes in the sidewalls to aid in preventing moisture intrusion into the trailer.



COMPOSITE REAR DOOR

The design of the composite rear door optimizes thermal efficiency and reduces weight, providing a lightweight yet strong rear door.



REFRIGERATED TRAILER

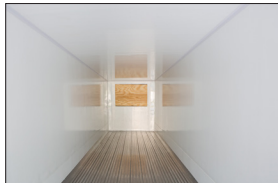
ALUMINUM SCUFF

The 6-inch scuff with a 12-inch liner scuff helps prevent damage while loading and unloading. There are no exposed attachments that loads can snag or tear out.



PLATEN FOAMED SIDES & ROOF

The Stoughton insulating process ensures that the trailer is fully insulated in 360 degrees with no voids or uneven areas.



ALUMINUM CROSS MEMBERS

The extruded aluminum cross members provide a strong yet lightweight floor.



TRIPLE WIPER SEAL



We build our refrigerated trailers with a triple wiper seal door gasket to prevent water intrusion and minimize air loss, protecting the interior of the trailer and your cargo from the elements.

REAR UNDERRIDE GUARD

The new rear underride guard comes standard with no additional cost and weight. It resists compartmental intrusion of an automobile when the location of impact is at 30% to 100% overlap of the width of the car to the guard. Complies with all applicable U.S. and Canadian regulations.

